

Target:

1091 - 6209

The Grassy Knoll - Dallas on November 23, 1963, 12,28

Tasking:

Move to the optimum position and describe the place known as the 'grassy knoll', describe any life forms at this place, describe the unfolding event.

Feedback:



Minutes after the shooting, Dallas Times Herald photographer William Allen ran from the newspaper building to Dealey Plaza and caught this view of bystanders milling around Dallas Police officer Clyde Haygood's motorcycle at the foot of the grassy knoll. The names of most of these people are unknown. An unidentified officer peered over the picket fence at a spot where some witnesses thought a shot originated.



## Shot sequencing and origins

There was a clear consensus among the witnesses as to the number of shots: over 90% thought there were three or fewer shots. More witnesses thought the final two shots were bunched together than thought the shots were evenly spaced, or that the first two were bunched.

Of the witnesses who gave some testimony as to the source of the shots, 35 thought the shots came from the direction of the Grassy Knoll, 56 thought the shots came from the direction of the School Book Depository, eight thought the shots came from an entirely different location (including two who thought the shots came from inside the limo). Only five witnesses thought the shots came from two different locations.

VB

NM

PS - OK

Relaxed

ES - OK

SC ✓

22-2-06

Timelord

8.20 Am

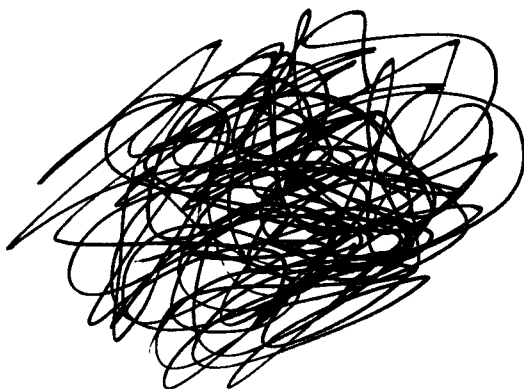
home

---

1091

6254

1



1091

6209

S<sub>1</sub>

(2)

A: Corp  
Large, L-shaped  
double Corp.

C - Large.

tall  
Plant.

Brown  
hard.

Long.

Rocks

People (lots)

urban?

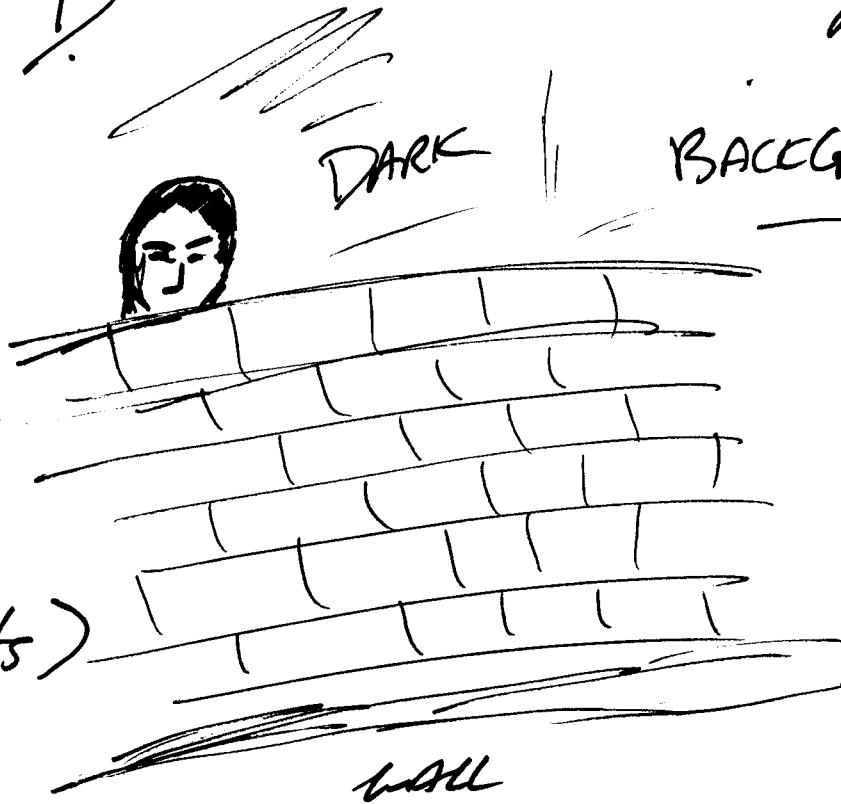
Observation  
made/s  
task

See  
warm

B - Subject/s

BACKGROUN

D.



"Looking above or  
from above?"  
(Interprete).

S2

(3)

1041

6204

C-tell  
Structure

A heavy  
hand,

B-LAND.

Similar

Angles?

blocks

Walls

Roads

LAND

high

man-made

Concrete

Solid

WARM

Sunny



Significant

Something above?

159/  
6204

S3

(4)

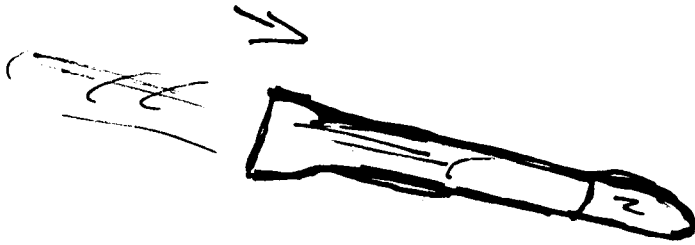
C - long -  
tube like  
short  
hot -  
fire

burn  
fast?  
Airborne  
glens

Death  
multiple  
man made?  
medal  
haz.  
falling  
Cord 2

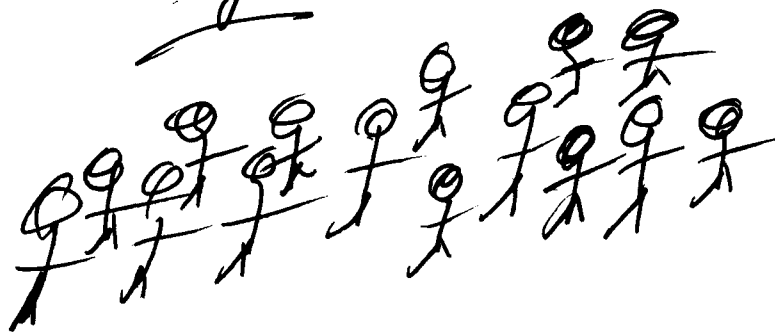
A.  
loop,  
zig zag  
downward

B - 1. forms/  
Energy -



damaged

Subjects



OT

⑤

S<sub>1</sub>

S<sub>2</sub>

S<sub>3</sub>

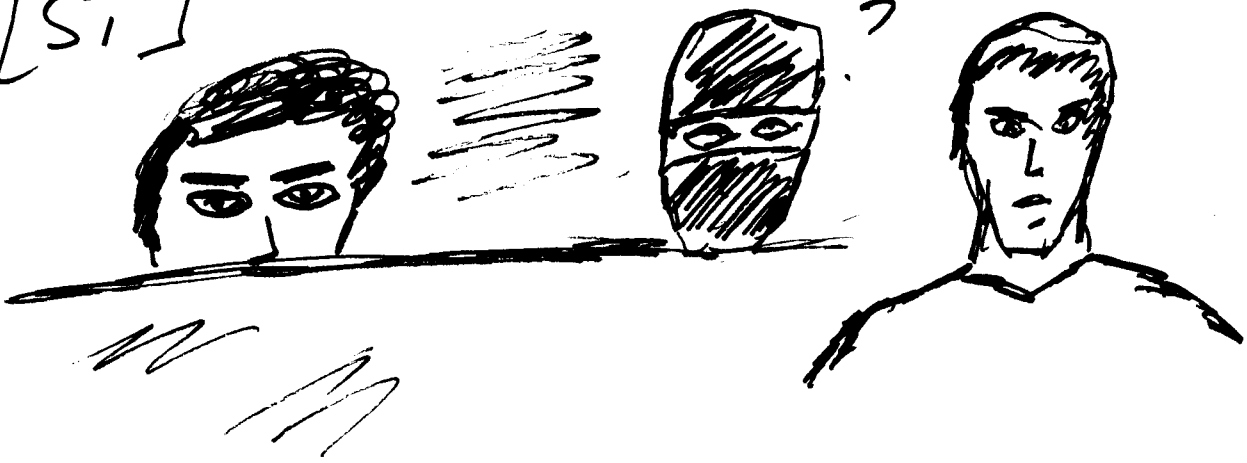
male/s  
lifeforms  
hidden  
hide  
out of sight  
Protection  
hair  
dark  
LARK  
Sweaty  
tense  
White  
Green  
Black?  
barrier?  
Crouch

tall  
hard  
Building  
Square?  
Solid  
Windows  
many  
on top?  
monument  
history

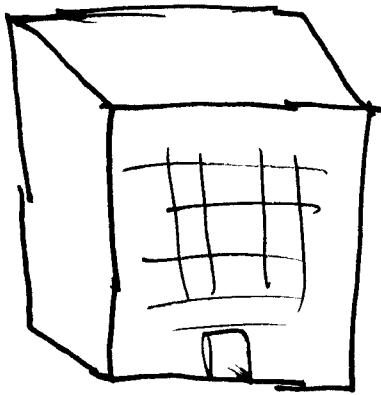
dent  
Fall  
Craft  
metal  
Small  
missile  
tube  
Fast  
People  
uh oh!  
bullet?

GS

[S<sub>1</sub>]



[S<sub>2</sub>]



[S<sub>3</sub>]





S. MATHRU [51]

S. m. T. E. Sigs P. P. C

Lifelines

3-4

others  
can

nearest  
fast

Airborne  
'duck'

building  
transport

Dead?

Terror

Terror?

Assassination?

Shots?  
Nasty  
Fire?

\*Subjects are looking up!  
Observing something,  
someone or each other.

running  
scared

hidden

Amplified  
disguised.  
prepared.

Above "share  
Focus is share

S

m

T

E

Sky

P

P

c

part 2

[52]

iron

structure

over made  
way

urban

-

target

hell

70's

building

building

all

important

Roads

historical

life forms

peak

\* Something above

or h.t.s this

building

"In the middle"

below

S M T F Sg P C  
 [53]

man made one Air flight on fire hot  
 Part missile bullet People  
 target

Confusion

\* Something really  
 Bad? misses ...?

danger  
 explosion

Panic  
 "Look out!"  
 Where  
 get down  
 Transport

\* focus on what tester needs to know.

Target Site is one of terror and panic. Subjects are afraid and running helter skelter.

"Something" is coming down on them. Not pleasant... Deaths

Feels like a terror attack but I suspect this has already happened. Sense a very strong "military" connection, covert perhaps as Subjects appear to be crouching or hiding while others appear to be out in the open.

More than one Subject is armed. These armed individuals are all at target site but at opposite ends?

Continued. ->

Looks like a Street battle,  
Chaos & fighting with Civilians  
Caught up.  
What ever this is, it is BIG!!

[S<sub>1</sub>] Shows some men hiding  
behind a wall? Could be symbolic  
AOL The Alamo.

Also sense transport as well  
Something is moving ....

[S<sub>2</sub>] Not sure what this  
building has to do with the  
target but is obviously important and  
is in the middle of the battle scene

Continued -

[S3] tube or bullet like device is on fire and coming down. People are taking evasive action and running for their lives.

I suspect this is connected with the [S1] individuals hidden BUT why is everyone looking above ??? weird.

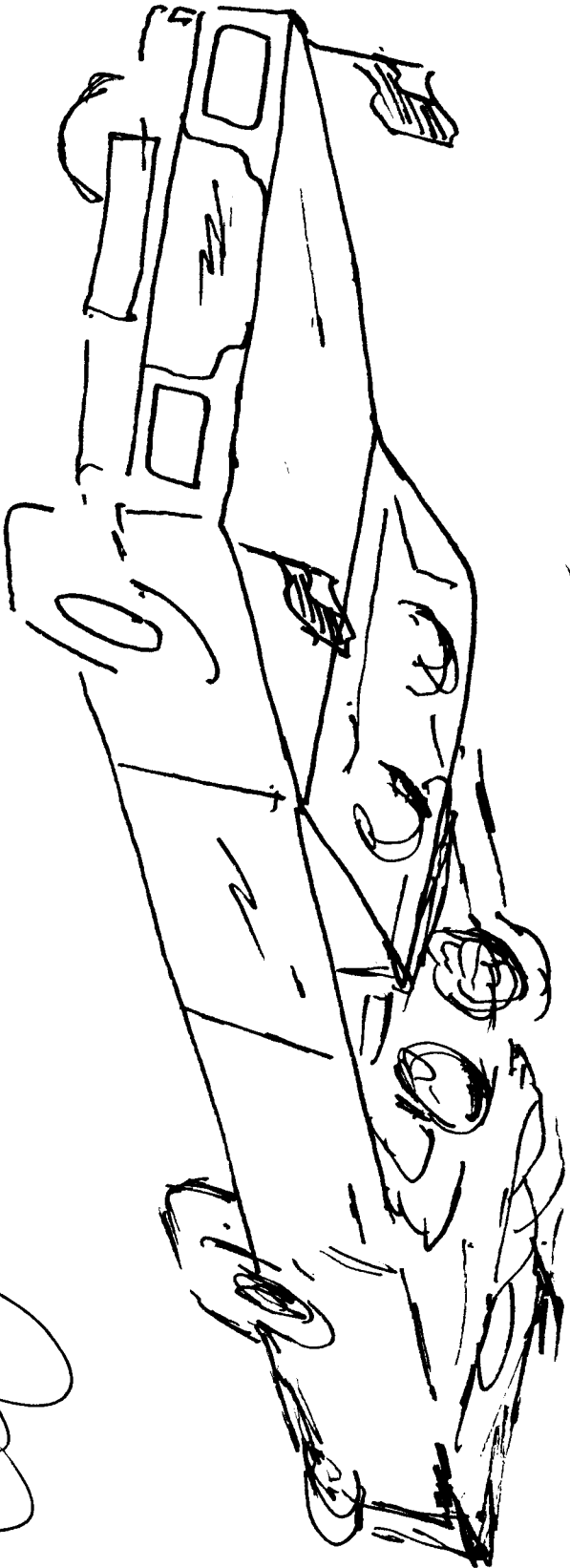
\* focus on DEATH at target site  
and the outcome

---

TWO very strong Ad's spring  
to mind. 1) Catastrophic terror  
attack and planned assassination  
of JFK.

The impact or 'feelings' I'm  
getting are on par with 9/11 attacks  
which brought the whole world  
to focus on this one activity.

Whatever it is, it was truly  
shocking. The full story has not  
been told. Secrecy is involved here.





Summary

wow! Cant wait to see fallback  
on this one. Even if I am not  
on target the emotions & feeling  
of Subject at the target  
CANNOT be ignored.

Something is being witnessed that  
will literally or more than  
likely already has changed the  
course of history.

This is either a terrorist attack  
or assassination of JFK.

END

