

**Describe the events that took place 16<sup>th</sup> July 1945 in Alamogordo New Mexico.**

[Robert Oppenheimer](#) was made director of the Los Alamos lab, and in 1943 he gathered about 200 of the best scientists in the field to live and work there. They designed two bombs, one using uranium (called "Little Boy") and one using plutonium ("Fat Man"). By early 1945, the plants at Oak Ridge and Hanford had produced enough raw material for testing. On July 13, 1945, at a site called Trinity 100 km northwest of Alamogordo, a plutonium bomb was assembled and brought to the top of a tower. The test was postponed by thunderstorms. On July 16, the bomb was detonated, producing an intense flash of light seen by observers in bunkers 10 km away and a fireball that expanded to 600 meters in two seconds. It grew to a height of more than 12 kilometers, boiling up in the shape of a mushroom. Forty seconds later, the blast of air from the bomb reached the observation bunkers, along with a long and deafening roar of sound. The explosive power, equivalent to 18.6 kilotons of TNT, was almost four times larger than predicted.

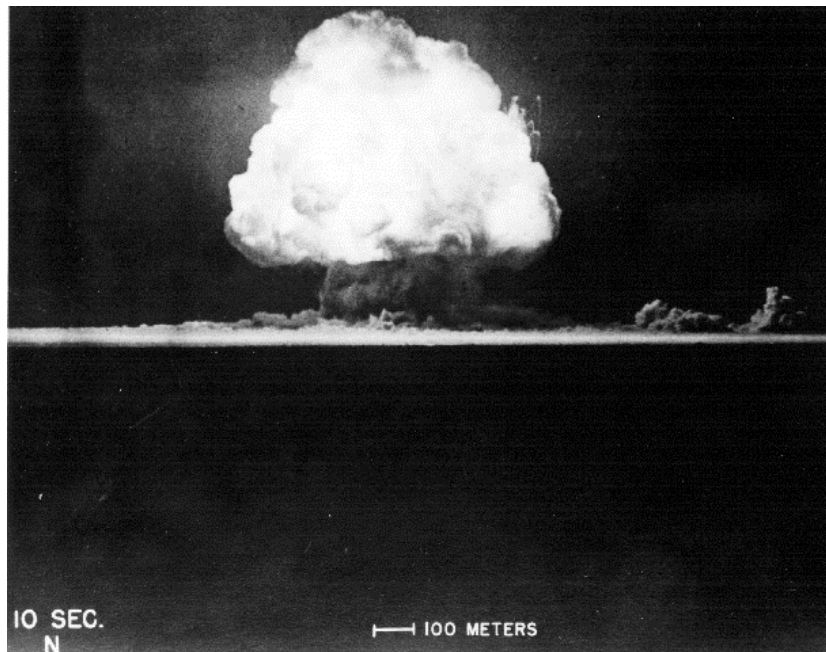
Some of the Los Alamos scientists had circulated a petition asking President Truman to give Japan a warning and a chance to surrender before using the bomb. Some signed, some didn't, but the project remained a secret until the end.

Twenty-one days after the test, the B-29 bomber Enola Gay dropped the uranium bomb on Hiroshima, Japan. Three days later the plutonium bomb was used to bomb Nagasaki. The two bombs killed approximately 150,000 people when they fell. Earlier in the year, intense bombing of Tokyo with conventional bombs had killed about 100,000 people without causing Japan to surrender, but on August 15, 1945, Japan officially surrendered, bringing an end to World War II.

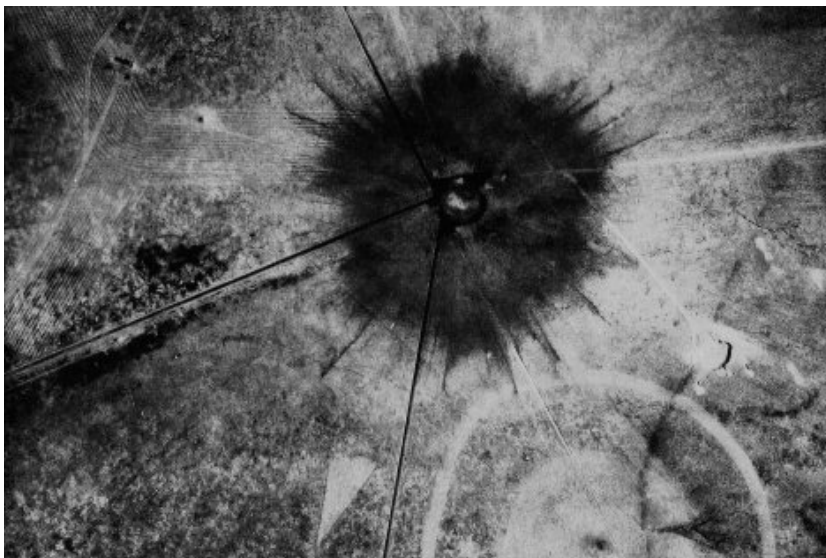
After the war, hydrogen bombs and other nuclear weapons continued to be developed by the United States and its former ally the Soviet Union. The competition between the ideologically different nations led to an "arms race" that shaped the postwar decades both economically and philosophically. Nuclear fission was also put to civilian use in power generators in several countries. They made cheap electricity and were a source of radioisotopes for other types of research, but came with their share of problems and dangers. Reactors are still in use, but in many places have fallen out of favor as an energy source.

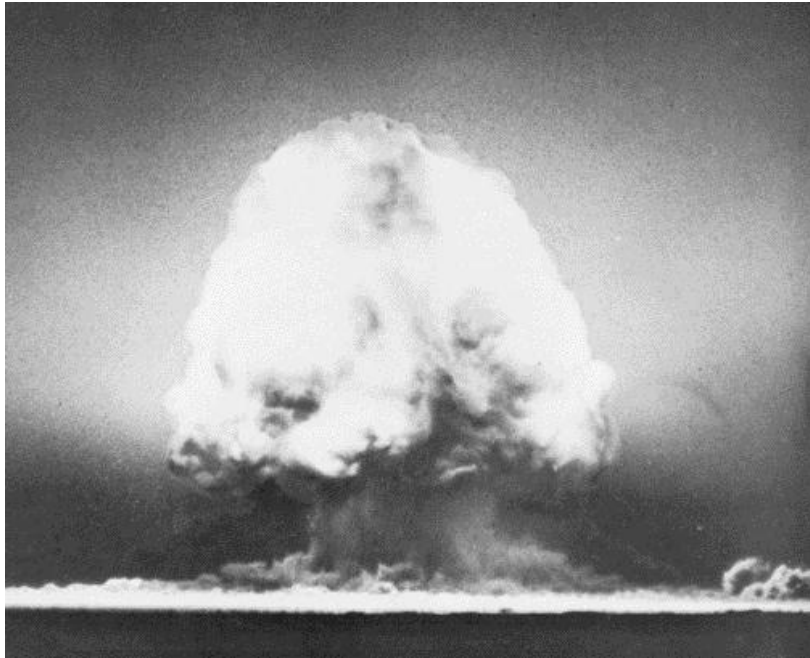


basecamp



the blast





Page: 1

Stage: 1

Date:

3:20

7:00pm

I: FEEL RELAXED 'N' READY 2 ROCK N ROLL!

BEATS:

248-673



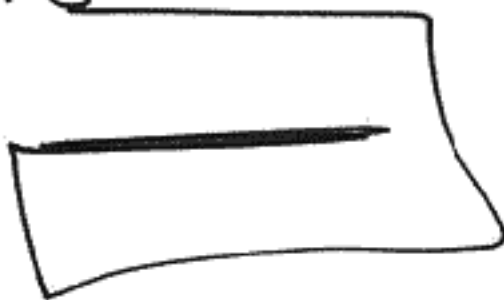
A. curv down, cur up, loop, across, DOWN, across.

Soft/hard

energy/structures

AOL-B  
JOINED!

248-678



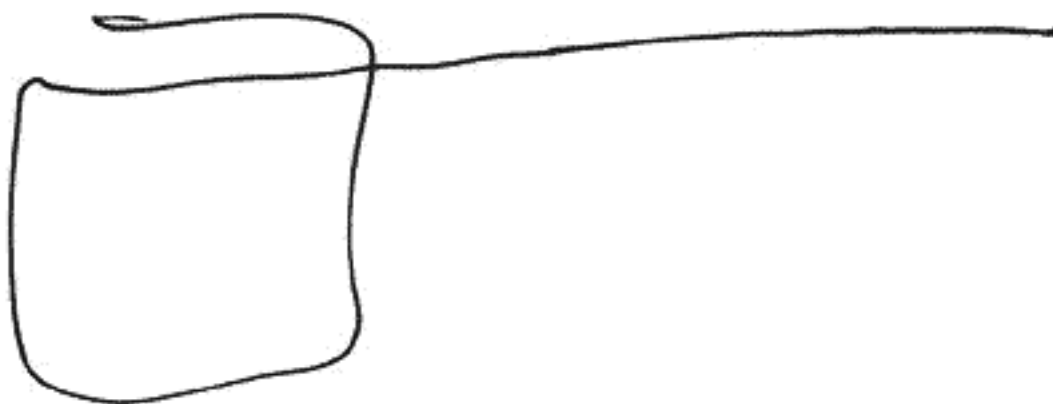
A: Across, Down, Across, up, Across.

Hard

B: Structure.

AOL-B  
SOLID!

248-673



A: Across, Down, Across, Up, Across.

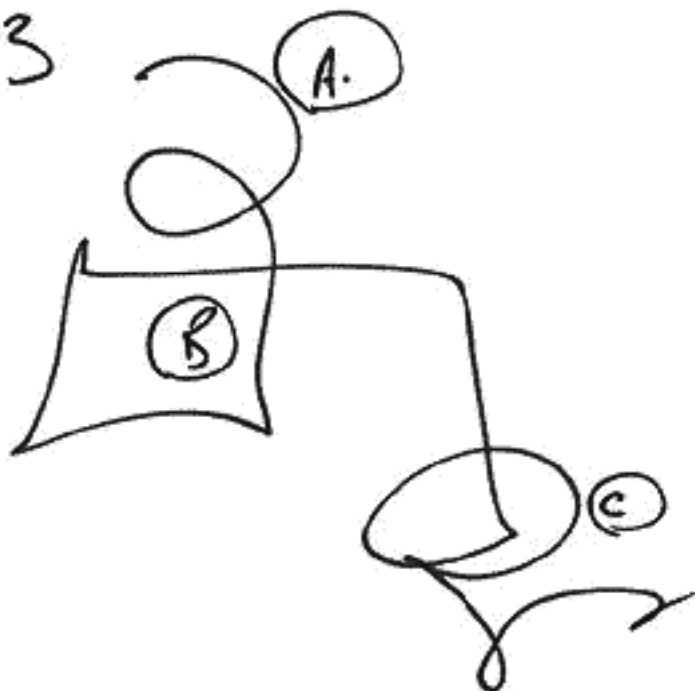
Solid.

B: Structure.

AOLB  
LONG  
SURFACE!

AOLB  
Runway!

248-673



page: 3

Stage: 1

Doc

BREAKS:

(A)

A: curv down, curv up, down.

Soft.

B: Energy.

(B)

A: Down, across, up, down, across

Hard, Solid

B: Structures.

(C)

A: curv up, curv down, curv up, loop.

Soft.

B: life form

Dr. Im interested!

A < B  
MAN MADE!

Page: 4

Stage: 2

Door  
BREAKS:

A: WHISTLE, STOPPED, REPEATED, CLANK, METALIC.  
SOLID. Regular.

AOLB  
~~Regular~~  
Ridgid

T1: Hard, cool, regular, grainy, curved.

AOLB  
MINUTES

T2: Warm.

V-

Colors - Red, Black, white yellow green,  
blue

Lum - Bright.

CON - High

AOLB  
SKIES!

T3: Wet, SALTY, BITTER, Bitty, lousy.

O: Damp, musty. STAGE.

AOLB  
START  
AIR!

D-

H: Low, flat, long, bading

V: Bitty

D: Few.

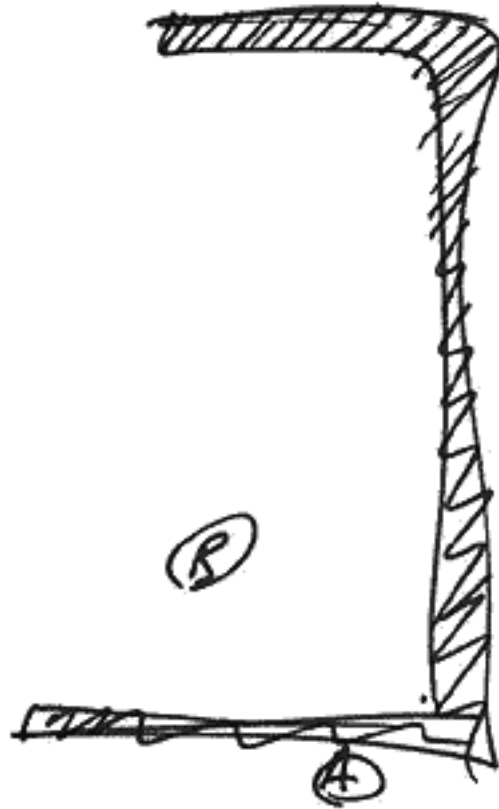
AOLB  
Regenerated  
AIR.

MDSV: THICK, SOLID, ANOMAL, PROTRUDING.  
SEGMENTED. SEPARATED.

AOLB  
CORNER

AL. OK. INTERESTED!

248-673



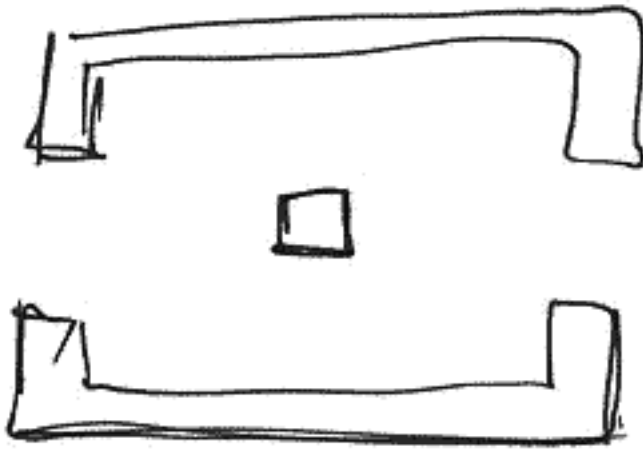
(A) LOW, SOLID, THICK, HARD, SOLID, CONSTRUCTED.  
SURFACES - VERY LOW.

(B) SPREAD - BOLTED, CONTINUING.  
DIFFERENT.

AOLB  
FUNCTIONAL



248-673



AL: WEIRD! AM I AOL'ING ON THIS!

MOVE 250FT ABOVE TARGET - SOMETHING SHOULD BE VISIBLE - SKETCH.

248-673



LIKE SPOKES  
'SPOKE' LIKE.

AL.  
WEIRD!

32

D

AE

EL

T

I

ADL

Appl

Touch

Warm  
Solid  
Grey

Thin  
Thick

Manmade  
Surface  
Walls.

Construction  
Structure

People

ADL.  
Prison

Lick

Salty

Sour

Bitter

Cool

MANMADE

CHOKING  
TASTE

Surface.

page: 8

Stage: 4

Don

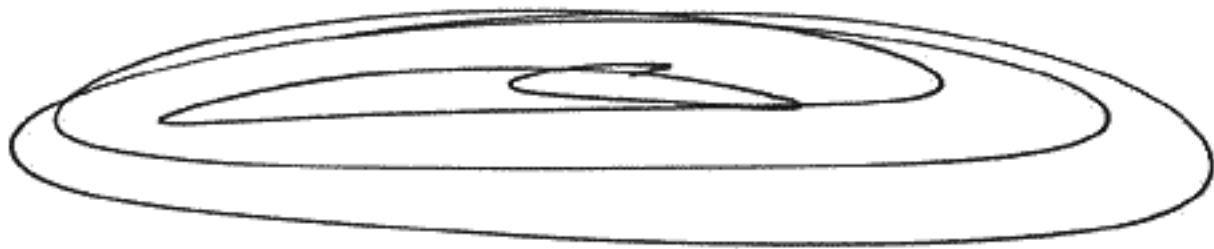
S2 D AC EL T I PL Ad/S.

~~any.~~

Spiralling

TAM  
High  
open  
wide

ABOVE



VORTEX  
LIFE.

SPARKLING  
'IN WAVES'

HURICANE

Page: 9.

Stage: 4

Day: 2.

S2 D AE EI T I APL APL/S

---

~~Energy~~

FOCUSSED  
INTENT.  
ENERGY.  
PHYSICAL  
'FEELS ANGRY'

SUNSHINE  
BREEZE  
COOL.  
OZONE'SMELL

CARRIED  
ELECTRICAL.

AZ: IT SMELLS LIKE BEFORE A  
THUNDER STORM.

APL.  
WEAK  
HARDC

page: 10.

Stage: 4.

Daz

S2 D AE EI T I VL Ap/S.

---

MOVE TO TARGET CONTENT + DESCRIBE.

THICK  
SOLID

WAYS  
BOXED  
CONTINUAL  
people.

INTENT  
CONFUSED  
'SUMMON'  
'PROCEED TO'

GRAND  
HALL!

AE: A FEELING OF IN THE PAST.  
MEN + WOMEN TOGETHER. A STARTING  
OF SOMETHING FROM ONE OR TWO PEOPLE TO  
AN AUDIENCE OF MANY!

page: 11

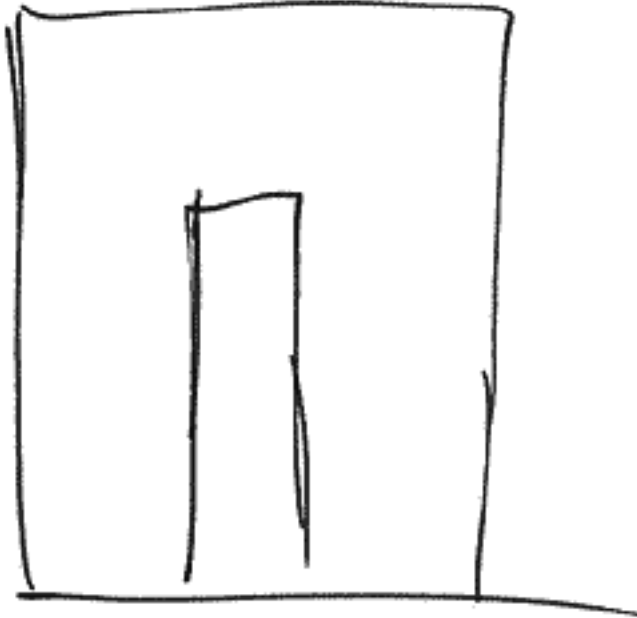
Stage: 4.

Doc.

S2 D AZ EL T I NoL No/S

---

MOVE TO TASKERS QUESTION + DESCRIBE WHATS THEY NEED



GATE OF  
THE  
SUN.

~~Antio~~  
Mexico

Religious  
ceremony.  
TIME  
PRECIOUS.

AZ: HEWN/CREATED BY WATER.

Structure:

SOLID WITH THICK WALLS. - HANDMADE.  
AN EARLY IDEA HAD A LONG ELEMENT  
WHICH COULD BE A ROAD OR PATH OF  
IMPORTANCE.

THE STRUCTURE HAS CORNERS + SIDES.  
CORNERS SEEM TO BE OF IMPORTANCE.

INSIDE THERE IS SPACE - THIS COULD  
BE WHERE THE 'STALE AIR' DATA  
COMES FROM!

SKETCH DATA DOES INDICATE MORE THAN  
ONE STRUCTURE WITH POSSIBLE SMALLER  
STRUCTURES ARRANGED AROUND A CENTRAL  
STRUCTURE - DATA SAYS: 'SPOKE' LIKE!

GREY - HANDMADE, WALLS, CONTAINING - PEOPLE.  
FROM THE TASTE DATA I WOULD SAY THE  
STRUCTURE IS MADE OF STONE

ENERGY

ENERGY, TAN, WIDE, OPEN - A FEELING  
OF THIS BEING 'ABOVE' AND IN THE AIR.

THE ENERGY CIRCLED IN A 'VORTEX  
LIKE' MOTION.

IT SPARKLED.

MOVEMENT IN WAVES.

'ANJURY' FEELING TO THE ENERGY.

FEELS ELECTRICAL AND CHARGED.

SWIRLING, CAUSING A BREEZE WHICH IS COOL  
+ WITH A SMELL OF OZONE!

FOCUSED, INTENT, ENERGY, WHICH IS PHYSICAL.



LIFEFORMS

INTENT!  
 CONFUSED!  
 SURMON OR FEEL DREADED TO.  
 A SMALL FEW PRESENTING + SHARING  
 TO A LARGE MASS OF PEOPLE -  
 LIKE AN AUDIENCE - LIKE A SHOW.

A FEELING OF IN THE PAST!  
 MEN + WOMEN TOGETHER.  
 VERY SIMPLE DRESS - COVERS MODESTY!  
 INDIAN LIKE IN FEEL + LOOK  
 DARK SKINNED + DRESS / SKINS. SIMPLE!

I FEEL THE ENERGY ABOVE MAY HAVE  
 SOMETHING TO DO WITH THE  
 SURMON / PREACHING / CEREMONY!  
 AND ALSO TO THE STRUCTURE - CONSTRUCTED  
 FOR THIS REASON.

FEELS RELIGIOUS BUT SIMPLER, OLD, BASIC  
 IN FORM.

I ENDED ON AOLS OF:

' THE DATE OF THE SUN '

' MEXICO '

7.50pm  
DAZ