

~~SECRET~~/NOFORN - HANDLE VIA SKEET CHANNELS ONLY

PROJECT SUN STREAK (U)

WARNING NOTICE: INTELLIGENCE SOURCES AND METHODS INVOLVED

PROJECT NUMBER: 0157	SESSION NUMBER: 1
DATE OF SESSION: 26 MAY 88	DATE OF REPORT: 26 MAY 88
START: 0905	END: 0955
METHODOLOGY: CRV	VIEWER IDENTIFIER: 025

1. (S/NF/SK) MISSION: Initial Stage 2 session. Site was Titan, the largest moon of Saturn.
2. (S/NF/SK) VIEWER TASKING: Coordinates 0157/3914.
3. (S/NF/SK) COMMENTS: Initially, 025 maintained an acceptable degree of structure, but this began to fall apart midway into the session. This is understandable, however, since at the beginning of each stage the "noise level" is predictably high.
Problems: 1) 025 still has a tendency to call an analytical B component prematurely and, therefore, sometimes incorrectly. For example, the habit persists of calling all liquids "water".
2) 025 must learn how to control the flow of Stage 2 data so as not to become overwhelmed by it. 3) AOL's must be called and objectified! These problems were brought to 025's attention; they should begin to disappear soon.
Note: 025 has expressed the desired to learn via "exploring and making mistakes", vs tight monitor guidance/control. As long as 025 does not continue to repeat the same mistakes and progresses at a normal pace through each stage of training, this program is generally acceptable to the monitor.
4. (S/NF/SK) EVALUATION: [3].

SG1J

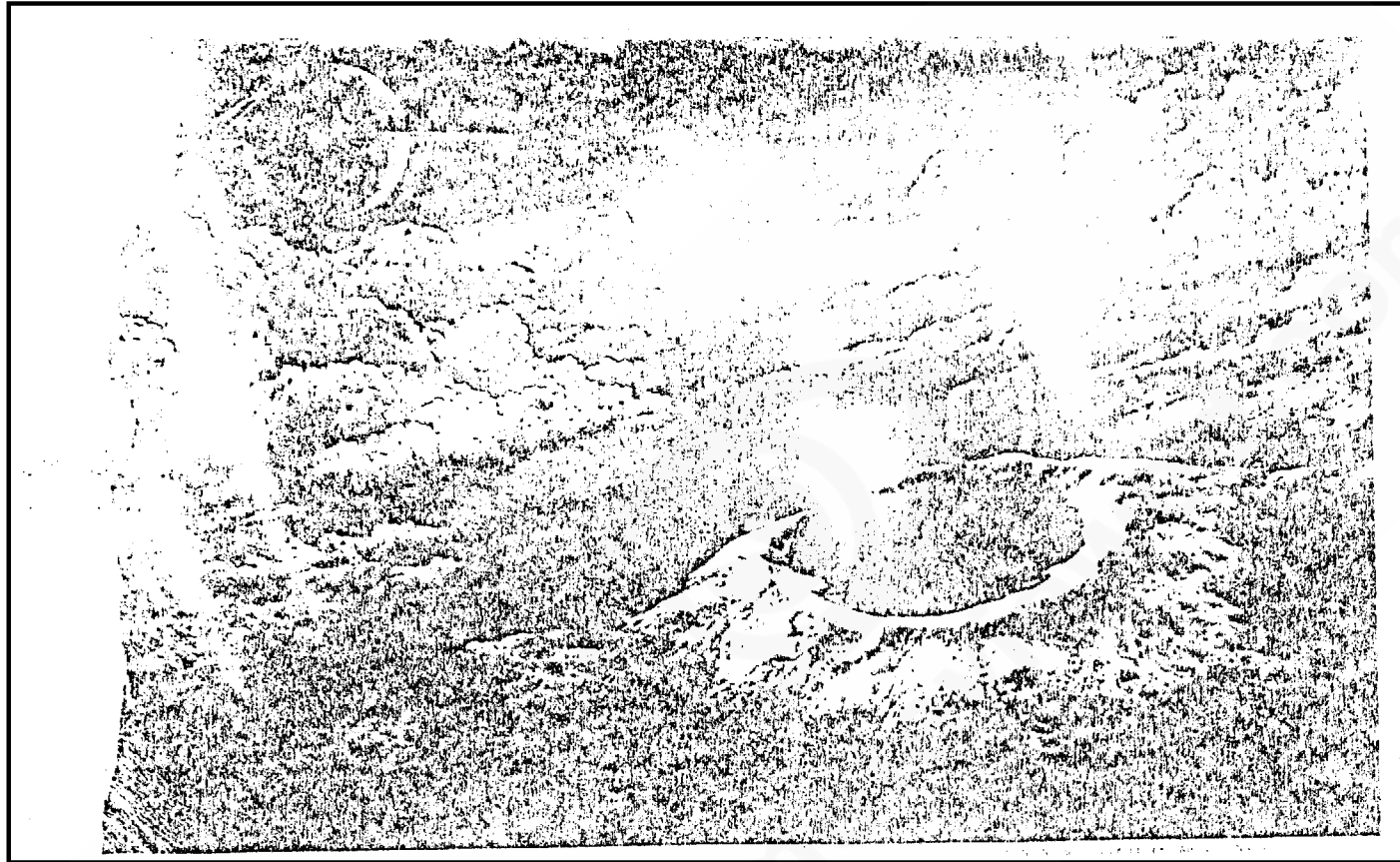


CPT, USA

~~SECRET~~ NOFORN - SKEET CHANNELS ONLY

CLASSIFIED BY: DIA-DT
DECLASSIFY : OADR

CPYRGHT



CPYRGHT

CPYRGHT

MOONS OF SATURN

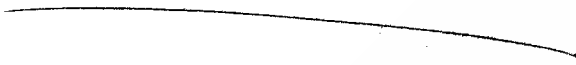
concentration of a surface should be
atmosphere too thick for Voyager cameras

COLD CHEMICAL STFW, the surface
of Titan, Saturn's largest satellite,
abounds with organic compounds
though with temperatures lower than
minus 180° C (-292° F) it is probably too
cold for life. Clouds and lakes of ethane
surround islands of ice in this artist's

025
26 May 1988
0905

AV-cold
PI-more

0157
3914



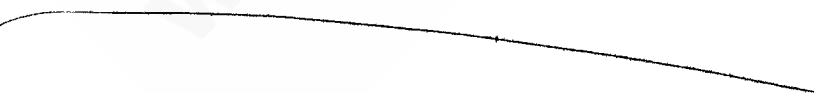
A. across
hard
B. icy

0157
3914



A. across
notion
B. water

0157
3914



A. across

B. hard

S-2 ~~dark dot~~
~~brown~~
green

little
green
dot-ridge

0157
3914

A. across top
angle across
B. ~~Emb~~ Land
Embankment

S-2 light sand brown
motion

soily

ALL-BK

~~tundra~~
Alaska

ALL-
sparkly

ice water

S-2 sparkly
~~#~~

ALL-icy
particles

~~#~~

Sturkman 1/1/63
ADG-111
particle

! and it is
note to due vent
cool temperature
paper for seal
Hoch soil

1746 greener
green
paddy

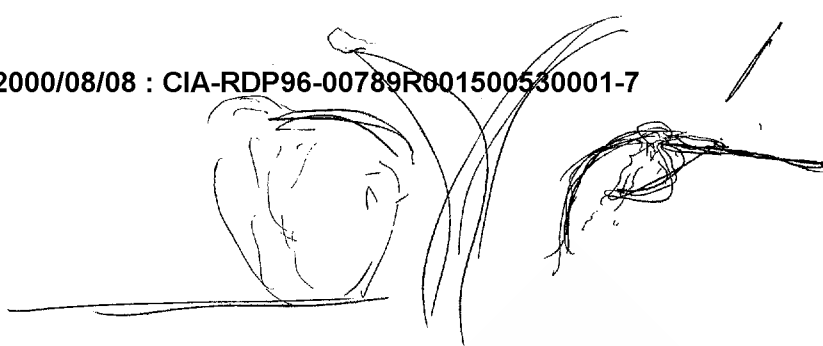


Foot

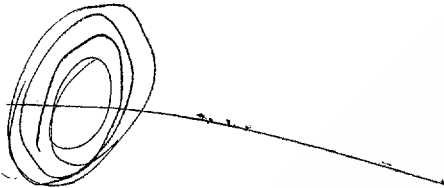
Boy

Not Open expensive
Only over such life can survive
1/1/63

(Night)



0157
3914



A. ^{curving} up over
down
hill

A-C-BK

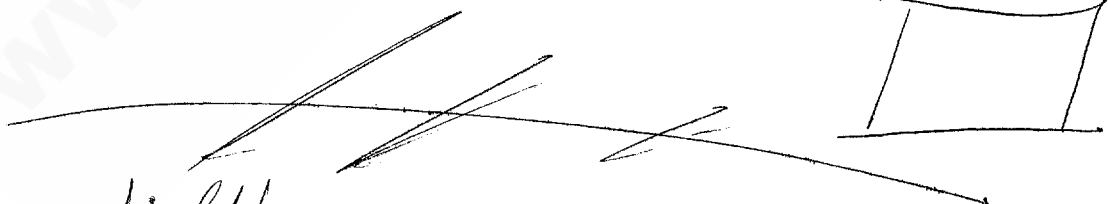
0157
3914



cylindrical
Booby
concrete built
man-made



0157
3914

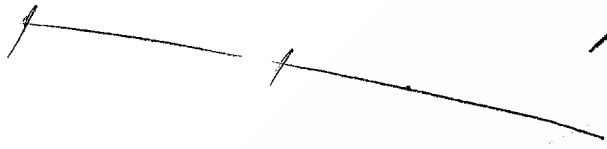


light brown
concrete - St. 4

A. pipe curve
down

man-made
B. structure

0157
39/41 +



A. M. C. C. C.
C. M. C. C. C.
- P. C. C. C. C.

B. M. C. C. C.

