

REMOTE VIEWING SESSION DATA

* Remote Viewer : LB

* Interviewer : PS

* Observer(s) : _____

* Date : 11/14/85

* Starting time : 1448 hours, local

* Site # : 0126

* Acquisition by: (ERV) ERV PRV ARV BRV Other _____

* Working mode : (GT) HEM Other _____

* Feedback class: A B (C)

* Ending time : 1546 hours, local

* Notes : Ops Trng

* Highest stage : III

* Evaluation : +

* Actual site : Nevado del Ruiz (Volcanic Explosion)

* RV summary : _____

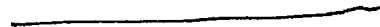
SG1J

FT. MEADE
14 Nov 85

SG1J

1448 HRS.

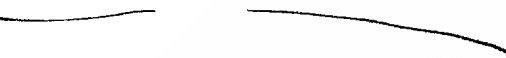
5° 10' N
74° 50' W



A: ACROSS
FLAT
ROCK
HARD

B: LAND C

5° 10' N
74° 50' W



A: ACROSS
CANYON
HARD

B: LAND

5° 10' N
74° 50' W



A: ACROSS
HARD
HARD

B:

CONF OKK.
SOME OTHER FBI
TALK THEM NOT
COMING THROUGH.

(2)

5° 10' N
74° 50' W



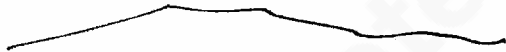
A: AROUND
KIND
INNOV

CONF. DRK.
ALMOST A
MANMADE FOOT.
~~BOTH~~ MANMADE
+ NATURAL FOOT.

NO DRK.
SAND PITS.

~~50~~ ABOUT

5° 10' N
74° 50' W



A: RESIDUE
HAND
ROCK
UNDER
MANMADE
NATURAL PC

B: MONUMENT (54)

5° 10' N
74° 58' W

MISS BRK

5° 10' N
74° 58' W

MISS BRK

5° 10' N
74° 58' W

D: ACN3
DUNE
SMOOTH SD
FRND PL
B: LAND C

52' SMOOTH FACED
SOLID PL
WOOLY
THICK

LINDS
LINDY PL
BLACK "
LAWITS TASTE PL

MASONRY (54)

LINDS
BLOCKS
DUSTY SHELL IC
NOIS3 - C

NO C BRK
CONSTRUCTION
NOIS3
AUC BRK
QUALITY

(4)

S2: DUSTY C
PEOPLE NOISES PC
DRY CFD

NO C BKK.
DRY w/POOLS, P

SUNKOW C

BI - LOUDED

ROUGH
UNOUD

AN BKK
HOLE ROCKS. PC

NO BKK
QUARRY FLOOR

BOUNDED CFD.

OPEN PC

NO C BKK.
OPEN " UPWARD
DIRECTION

" CRACKING SOUND C

WIPES
UNOUD C

TALL PC
DEEP PC

LAST

~~AT BKK~~
← ~~AT~~ ~~STAY~~ ~~THINK~~ IS LAST, C

AT BKK.
SMARZMONT BE ALL THE LAST.

5



S2: YELLOW

NOZ PAINT
YELLOW
AS IN
HEAVY MACHINERY
YELLOW

- THIN PC
- SMALL PC
- ECHO SOUND 1831
- VERTICAL C
- STEEL ~~GRAY~~ COLOR PC
- WHITE / BUSTY PC
- POWDERY C

NOZ PAINT
POWDERY PAINT
LIKE ATAS. C

6

SL: PATCHED
SPOTTY PC
PATCHY

AO L BAK.
LIKE A PATCH OF
POWDERY SPARK, IMPACT
OF CLASH
(NOT SMOOTHLY
DISTRIBUTED)

ROCK TASTE
SLIGHT BURNING SMOEL. PC
ROCK DUST SMOEL

AO L BAK
GRAVEL PIT.

SOUND

AO L BAK
LIKE SLIDING
ROCKS / GRAVEL.

DUSTY TASTE C
DIRTY FEEL C
COAL TASTE PC

AO L BAK
MIND.

7

S2: UNITY FEELING C
 GRABOL SOUND PC
 DRY PC
 HOT C
 CLOSE FEELING (SY)
 SWEATY PC
 STEAMY C

SOL DRK.
 GOLD MINTS
 S. AFRICA.

SOUNDS
 HUMMING SOUND CFB
 CRACKLING SOUND PC
 WIND PC
 TALL PC
 ROUGH PC
 ANGLED CFB
 NARROW CFB
 CIRCULAR C
 ROUGH CFB
 SHARP CFB
 PAIN (SY)

AC BME.
 PAINFULLY SHARP & HARD.

EVENT IN QUESTION
IS PERCEPTIBLE

EVENT IN QUESTION
IS PERCEPTIBLE

[Handwritten mark]

ACROSS

NOZ DNE
SWORN
STATISTICAL
EXPLOSION (?)

EVENT IN QUESTION
IS PERCEPTIBLE

[Handwritten mark]

A: (ACROSS
DACH
VERTICAL
SAMP
HSE) PL
B: FIRE C

ACK DAK
A BOMB -
BUT W/ FEELING
THAT DESTRUCTION
WAS MAIN PURPOSE

S2! WHITE PL
YELLOW C
WIDOW C
HICKET C
SOFT C
POWDERY C
HART C

NOZ DNE
LOCAL, INTENSE
HSTAT.

(9)

S2:

ALL BKG
SHOTS SANDS
PROVIN GRPS

VERTICAL	C
OPEN	PC
BLACK	C
SLOPED	C

ALL BKG.
TOWNS

ALL BKG
ROCKS.

ALL BKG
FIND AT
BOTTOM OF
TOWNS

SLOPED	C
VERTICAL	C
THIN	QFD
SHARP	"
POINTED	"

ALL BKG
POINTED

SOLID	
LINE	C
OPEN	PC

ALL BKG
UNDERLAND
ROCKS.

(10)

SZ! HARDY
LANKS C

THIN
WHITE
ROUNDED C

ALL DRK.
THIN DENSITY

ALL DRK.
CLOUD OF
POST C

WHITE
HOT
INTENSE C

AT DRK.
INTENSELY HOT!

VERTICAL

ALL DRK.
ABOMB BAST

LIGHT PC

FLAT
LANKS
SOLID
OPEN

MAT.

BIG

CIRCULAR

LONG

ROUNDED

VERTICAL

UNSTAY

SLOPED

THICK

WIDE



CPYRGHT

A34 FRIDAY, NOVEMBER 15, 1985

THE WASHINGTON POST

THE ERUPTION OF THE NEVADA DEL RUIZ

Months of Volcanic Rumbling Warned of a Major Blow-Up

Harmonic Tremors, Mud Slides Preceded Colombian Blast

By Thomas O'Toole
Washington Post Staff Writer

Just as Washington's Mount St. Helens did five years ago, the Colombian volcano Nevado del Ruiz that erupted Wednesday night gave out numerous telltale signs in the last 11 months that it was building toward a major eruption.

As long ago as last December, seismographs began to pick up the rumblings of spasmodic earthquakes below the volcano that are the harbingers of worse things to come. In March of this year, there were several small steam and ash

"Everybody knew this was a volcano that hadn't suffered an eruption in 400 years...."

— Dr. Robert Christiansen, USGS

explosions near the volcano's 17,400-foot summit that signified more violent activity, and then on Sept. 11 of this year there was a

years, but everybody still knew it was a volcano."

Volcanoes erupt when the molten rock that normally lies far inside the mountain starts rising up, heating the rock above it and forcing it aside.

There were signs in recent weeks that a giant pool of molten rock (magma) as hot as 2,200 degrees Fahrenheit had begun to stir inside the mountain and had begun to move upward, pushing aside the tons of rock that lay in its way. The telltale signs of moving magma were the "harmonic tremors" in the earth near the volcano that apparently were picked up by seismic listening devices in the two months since the mud slide of Sept. 11.

Harmonic tremors are rhythmic motions in the earth that involve an almost continuous release of seismic energy. While earthquakes come in episodes and then stop, harmonic tremors go on for long periods at a steady frequency.

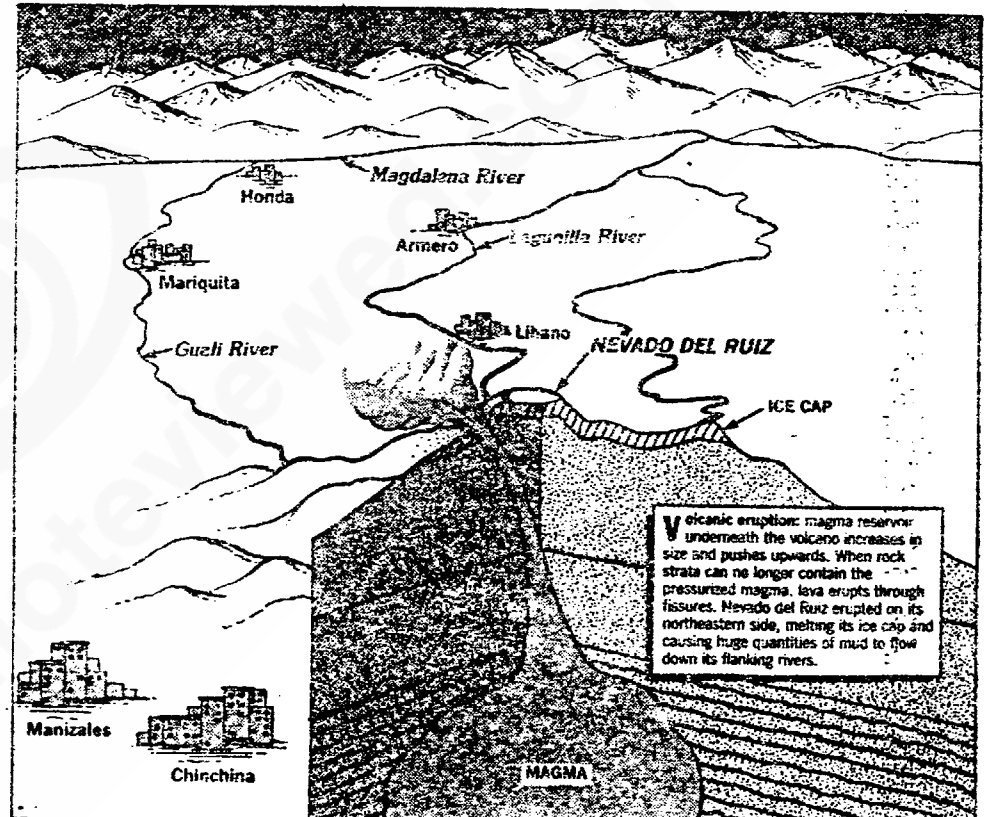
Christiansen said that harmonic tremors are always the result of moving magma and usually are the first signs of an impending major eruption. The U.S. Geological Survey said yesterday that Nevado del Ruiz had erupted Wednesday

sleeping towns in the valley was as deep as 15 to 20 feet.

A lesser mud flow on the western side of the mountain was still enough to create an artificial dam in the Quail River above the town of Mariquita, which Colombian officials were attempting to evacuate before the mud-filled dam broke apart on its own. Floods from melting snow and ice were reported in four rivers whose headwaters begin on the mountain.

The physical similarity between the eruption of Nevado del Ruiz and Mount St. Helens is striking. Both volcanoes slowly built to eruptions and both eruptions did most of their early damage with mud slides. The huge snow and ice pack on both mountains melted in the heat of eruption, cascading tons of water and mud down the flanks of the mountains into the river valleys below. But only 57 people died in the Mount St. Helens eruption, which occurred in a sparsely populated area.

Nevado del Ruiz is the largest and tallest of six volcanoes strung out in a line through central Colombia. The northernmost volcano in the Andes Mountains, Nevado del Ruiz has also been the site of



BY JO ELLEN MURPHY — THE WASHINGTON POST

largest mud slides in South American history. The USGS' Dr. Darrel G. Herd described it as a "wall of mud, trees and ice that went racing down the valley to the Rio Mag-

sen said. This means they retain their gases, allowing pressure to build, rather than venting them in a way that would relieve the pressure that builds up inside volcanoes, he

building in strength until it exceeds the weight of the rocks above that are holding it in. The result can be another eruption. The twin eruption of Nevado del Ruiz Wednesday

CPYRGHT

17,400-foot summit that signified more violent activity, and then on Sept. 11 of this year there was an eruption that melted enough snow and ice on the mountain peak to trigger a mud slide 20 miles long.

"It's not surprising, except for the violence of the eruptions that shook the mountain Wednesday night," Dr. Robert Christiansen of the U.S. Geological Survey (USGS) said by telephone from his office in Menlo Park, Calif. "Everybody knew this was a volcano that hadn't had a major eruption in 400

years. The U.S. Geological Survey said yesterday that Nevado del Ruiz suffered "two catastrophic eruptions" Wednesday night between 11 p.m. and midnight.

The back-to-back eruptions on the northeast flank of the mountain melted enough ice and snow on the mountaintop to trigger what the USGS called "two catastrophic mud flows down the northeast flank," which were channeled directly into the Laguillas River in the broad valley at the base of the mountain. Eyewitnesses said the mud in four

miles. The northernmost volcano in the Andes Mountains, Nevado del Ruiz has also been the most destructive of the six Colombian volcanoes, erupting in a "thunderous" explosion on March 12, 1595, and erupting again in 1828 and 1829. The volcano was "still smoking" in 1831 after its two 19th-century eruptions.

The Colombian mountain was also the scene of a major earthquake on Feb. 19, 1845, that shook loose enough snow and ice on top of the mountain to trigger one of the

dead trees and ice that went racing down the valley to the Rio Magdalena, killing an estimated 1,000 people then living in the valley.

Why did Nevado del Ruiz go almost 400 years without a major eruption? Geologists say they don't know, but many suspect it is in the makeup of the magma that lies below the volcanoes that formed the Andes Mountains.

"The magmas in the Andes are very viscous and stickier, let's say, than the magmas that lie beneath the Hawaiian volcanoes," Christian-

son said. "The magma is so sticky that it would relieve the pressure that builds up inside volcanoes, he said. "Hawaiian volcanoes are always blowing off pressure, which might be one reason they don't erupt catastrophically."

Another reason lies with volcanoes themselves, among the most unpredictable phenomena of nature. Said Dr. Meyer Rubin of the USGS: "Volcanoes can go 1,000 years without an eruption. There's no way to predict their behavior."

The upward movement of magma can continue off and on for years,

and another eruption. The twin eruption of Nevado del Ruiz Wednesday night could thus signal the start of an eruptive period that could last another 10 years.

There is also the chance that Nevado del Ruiz will have an impact on the world's weather. Depending on how much sulfur dioxide gas it pumps into the upper atmosphere, the erupting volcano could send a cloud of gas and dust around the world blocking just enough sunlight from reaching the surface to cool the earth by a degree or two.

Volcano Kills Thousands In Colombia

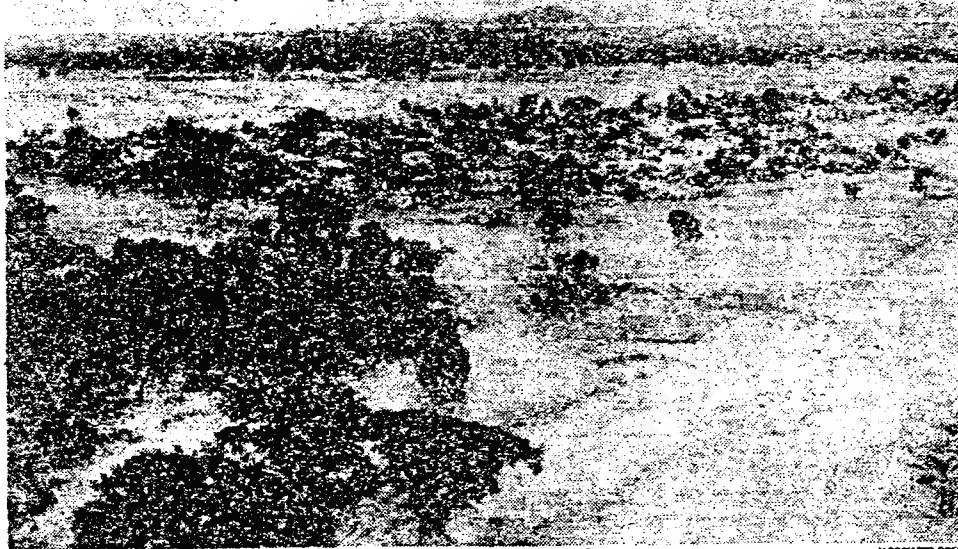
VOLCANO, From A1

for medical supplies, potable water and transport equipment to help in a rescue effort hampered by the destruction of bridges and roads. Colombian radio and television advised people in the disaster zone not to drink from local water supplies, which were feared contaminated by sulfur.

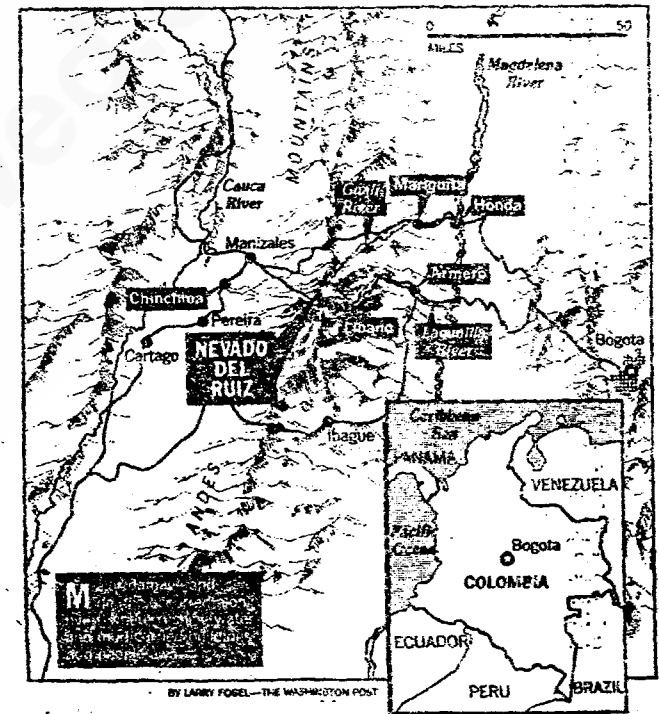
In Washington, the U.S. Agency for International Development said 12 helicopters were dispatched to the scene from a base in Panama, at the request of Colombia. A statement said AID relief expert Paul Bell and Darrell Herd of the U.S. Geological Survey in Reston, who has studied the volcano, were en route to offer assistance.

The most seriously affected town was Armero, with a population of 25,000, about 18 miles east of the volcano. It was said by some residents to have been 90 percent submerged.

Several neighborhoods in the city



Mud surrounds and partially buries Armero, as seen from a nearby hill. The town center is inundated at lower right.



BY LARRY FOGLER—THE WASHINGTON POST