

3108-2011



Drop in h.

LAND.

Slopes

DOWNWARDS

ABRUPT

DEEP

LAND

WET

AREA.

S1 1/2. A SIMONER FEEL OF NATURE / GREEN LOCATION.

Page: 1

Stage: 1

DAR

TARGET: 3108-2011

31.8.2011

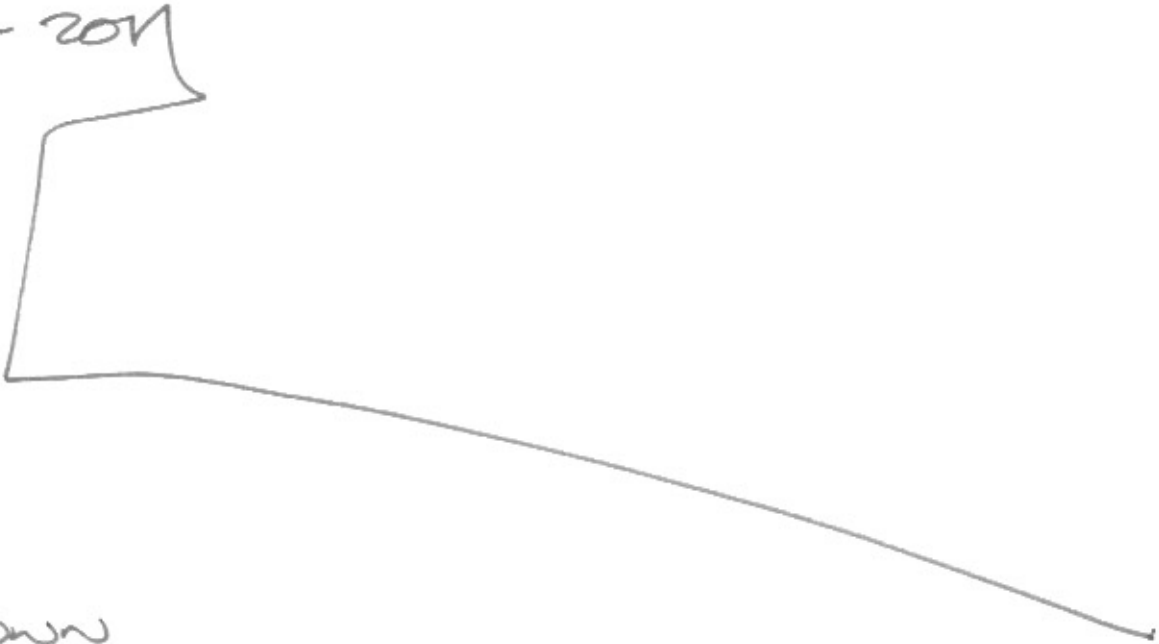
I: 15 MIN COOLDOWN. - FINE.

1.00pm

CRV.

BLIND.

3108-2011



Down

HILL

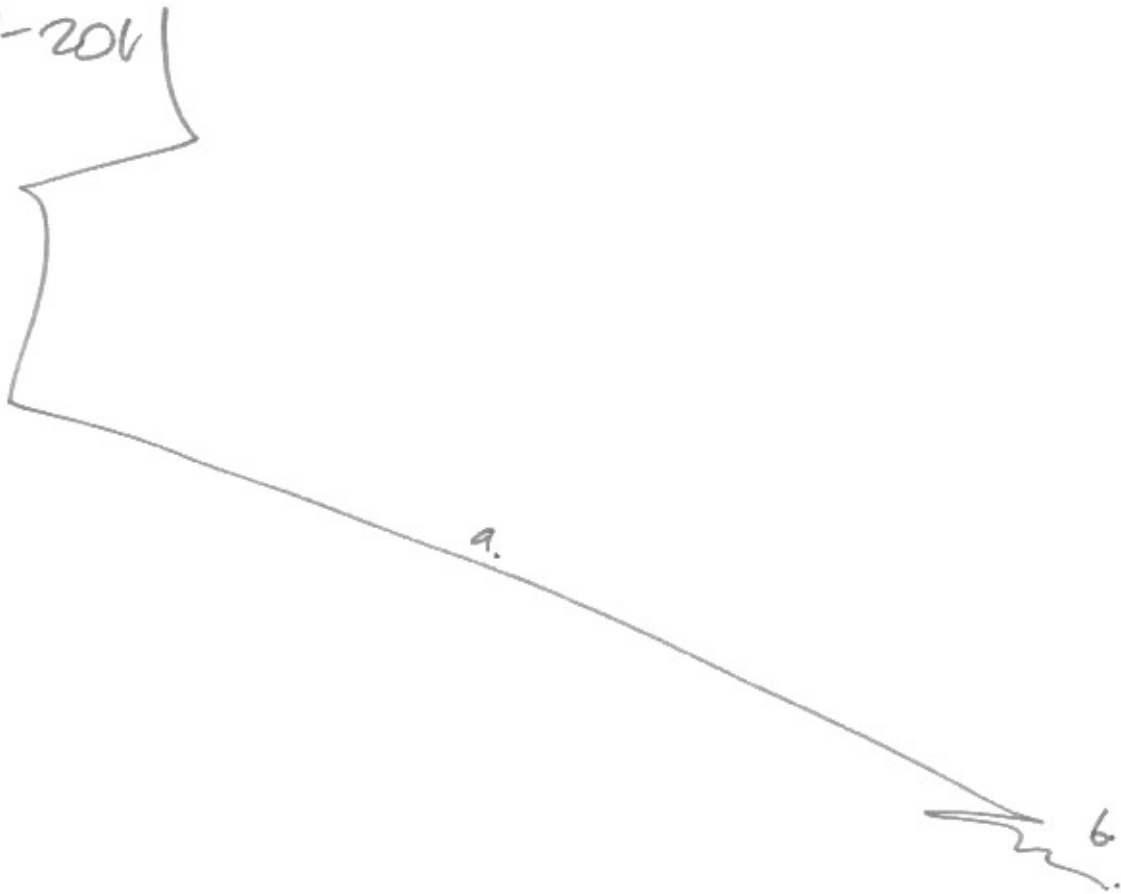
SLANTING

SLIDING

DOWNWARD.

AOL  
OUTSIDE.

3108-201



1.) Dawn

Abruptly.

'BONK' sound.

WET.

GLOOMY.

ARROWS.

BROWN

CREAK.

MESSY.

ADL  
FOREST.

6).

RAISED

Bumpy

Soil

MESSY.

Hard

BUMPED

AREA .

Asl  
Humped.



RAISED  
GROUND  
AREA.

Asl  
GRAVE .

A: RUSTLE, WIND, ROCK ROLLING, CRUMBLY.

APL  
NATURE

T1: MOIST, SPONGY, DAMP. ROUGH.

T2: NORMAL/WARM.

V- COLORS: GREENS, BROWN. BLUE, WHITE.

LUM: BRIGHT / SPOTTY.

CON: LOW.

T3: EARTH.

APL  
TREES.  
FERNS.

O: MUSTY. VEGETATION.

E's: WIND.

APL  
DEAD -  
EMERSONS -  
PAST -

SUB: Acrony. CRIMINAL. DISTRESS.

H ————— DROPPED

V. ) DOWN, SLOPED.

D. — DOWN.

SPECIALLY. BETWEEN PLACES A GAP.

AL: FEELS PASS!

3108-2011

SS $\frac{1}{2}$ :

A DROP DOWN INTO A flowing  
SHAPED AREA.



page: 7.

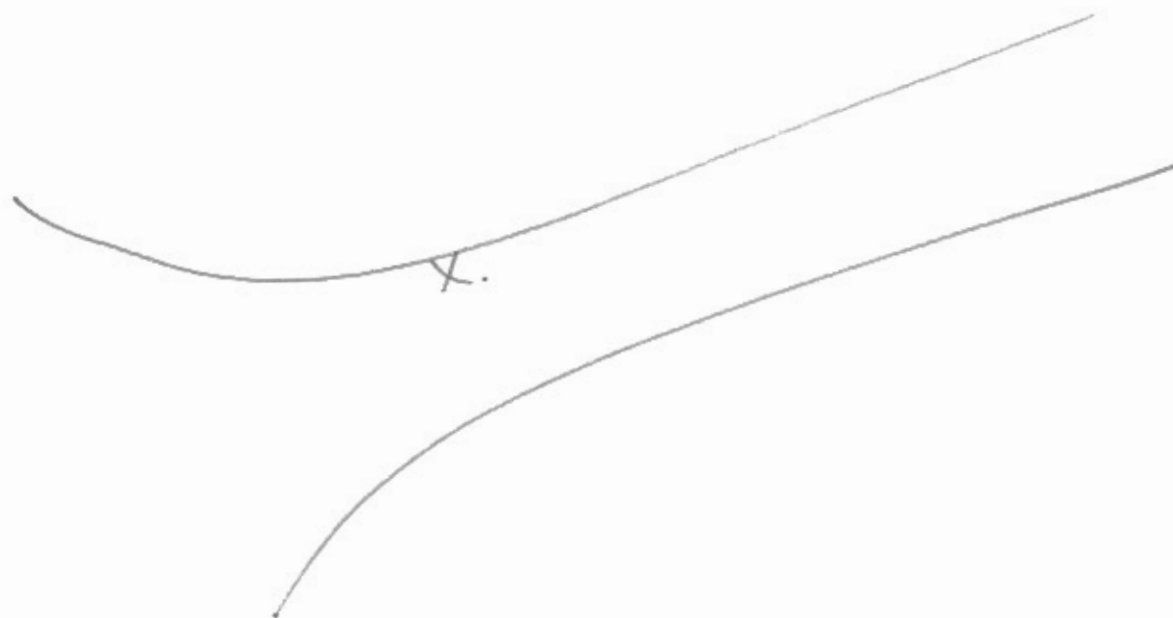
Stage: 3

DAR.

MOVE ABOVE THE TARGET LIFE/LOCATION - AT THE OPTIMUM POSITION SKETCH / DESCRIBE IN FULL DETAIL:

3/08 - 2011

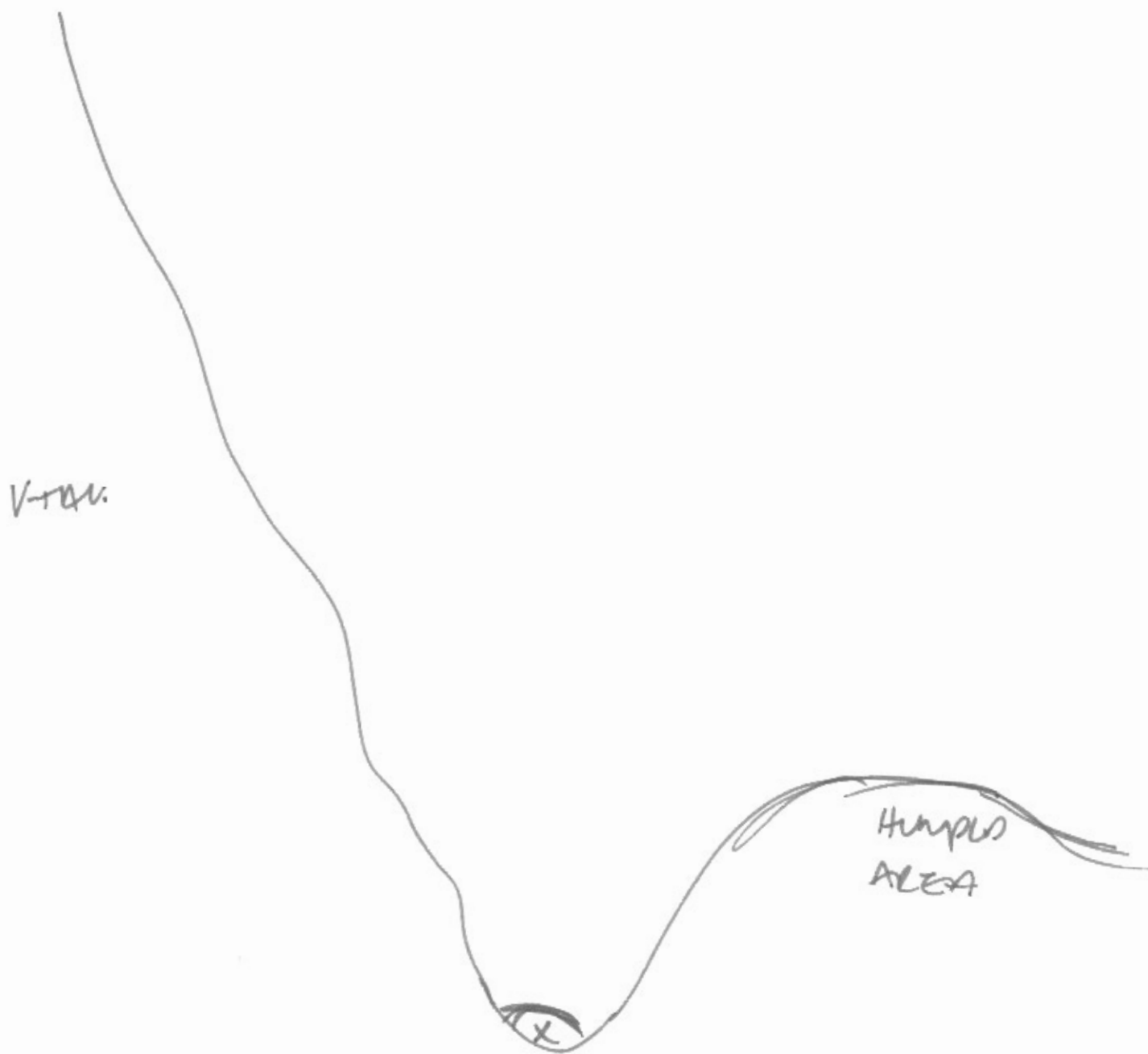
ABOVE.



LOCATION FEELS LOW / LOWER  
DITCH-LIKE

A SMALL DITCH-LIKE ENVIRONMENT  
TRAVEL ON ONE SIDE THAN THE OTHER.

SIDE  
VIEW  
ON



SS<sup>1/2</sup>: LIFE FEELS COVERED.  
HIDDEN UNDER SOIL/VEGETATION.  
BURIED  
THIS FEELS PAST.



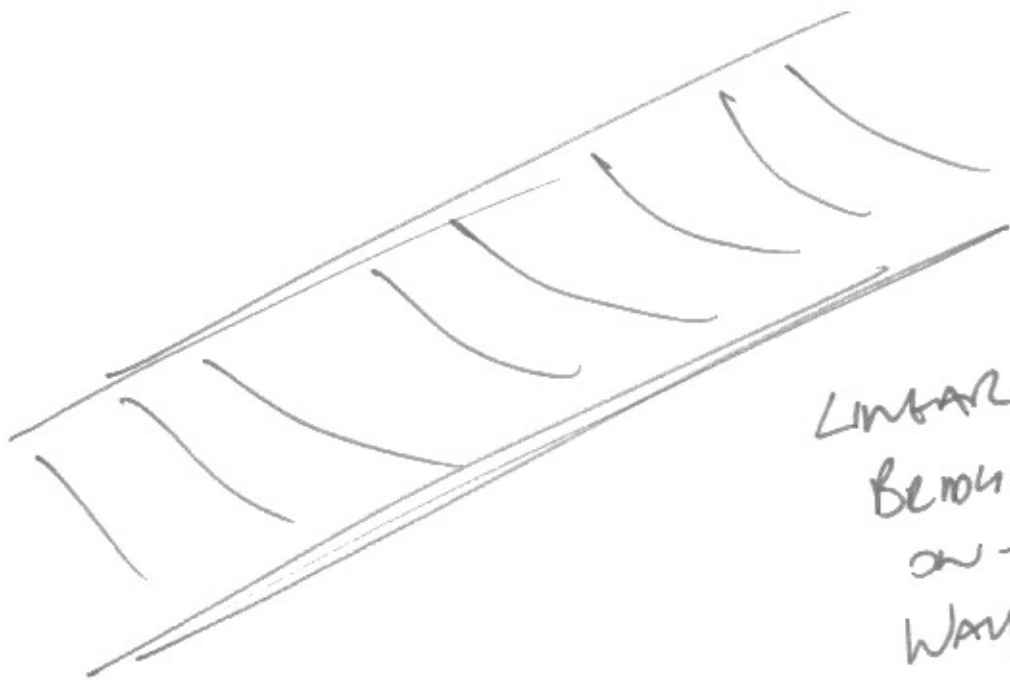
FROM LAST KNOWN LOCATION INDICATE DIRECTION + DISTANCE.

IFN



701

42  
MILES



Linear  
Bend  
on the  
Way.

S3<sup>1</sup>/<sub>2</sub>: Location feels messy.  
NATURAL.  
TRACKS.

page: 66.

Stage: 3

JAZ.

"C" ←

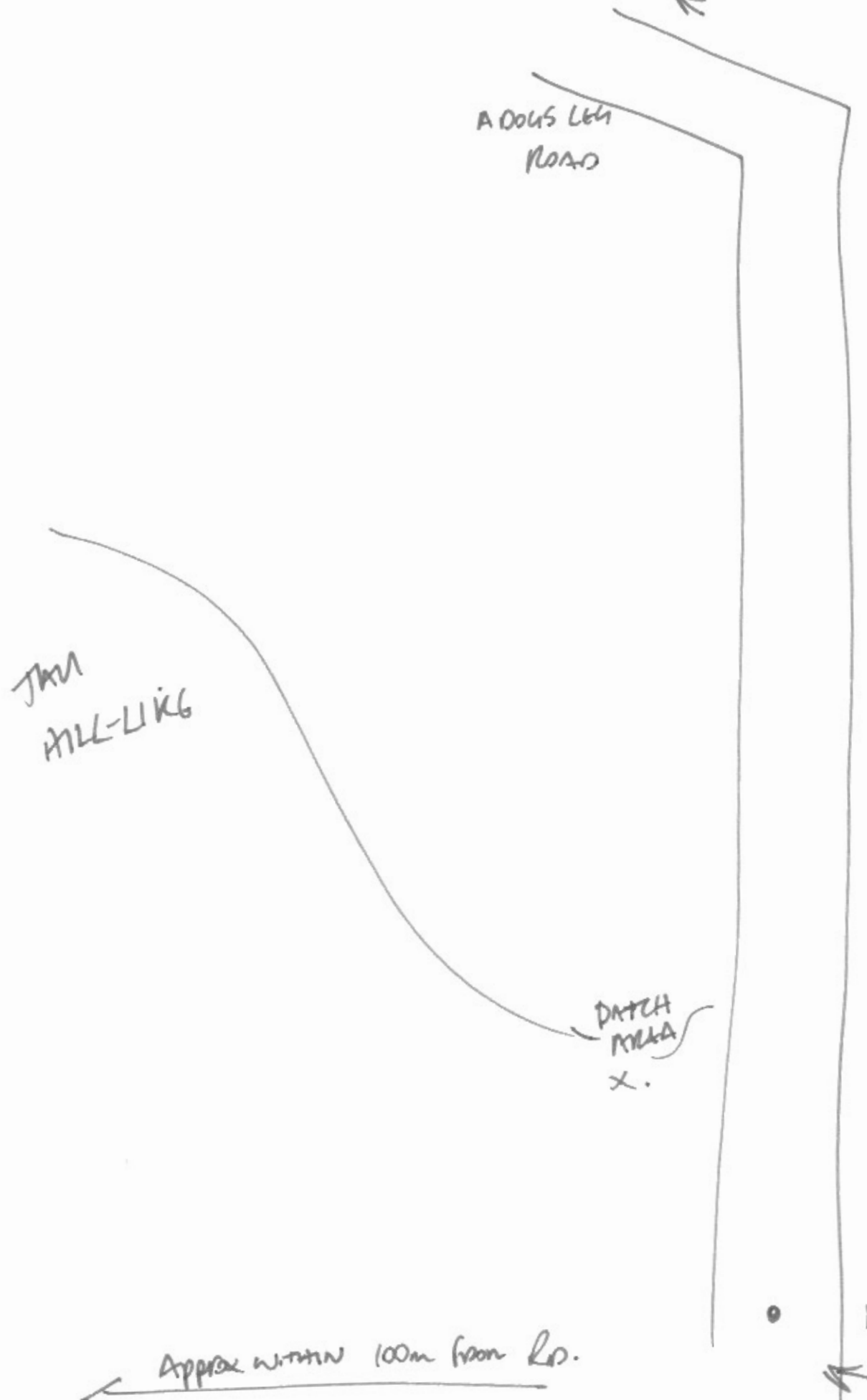
A DOUS LEM  
ROAD

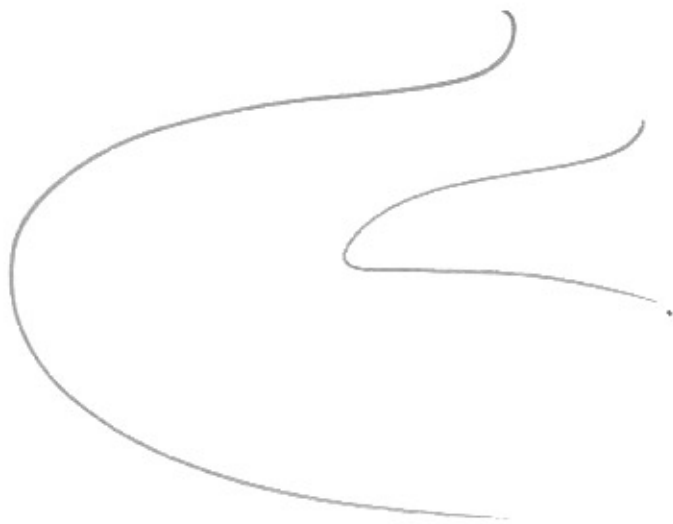
JAN  
HILL-LING

DATCH  
MELA  
x.

ADL  
INTER  
STATE

← Approx within 100m from Rd.





WINDY  
ROAD.

HIGH

REMOVE.

305  
NAME  
REQ/POP  
LOW PAPER/HAIR  
CURLY.

FORMING

HIGH  
MIKE.

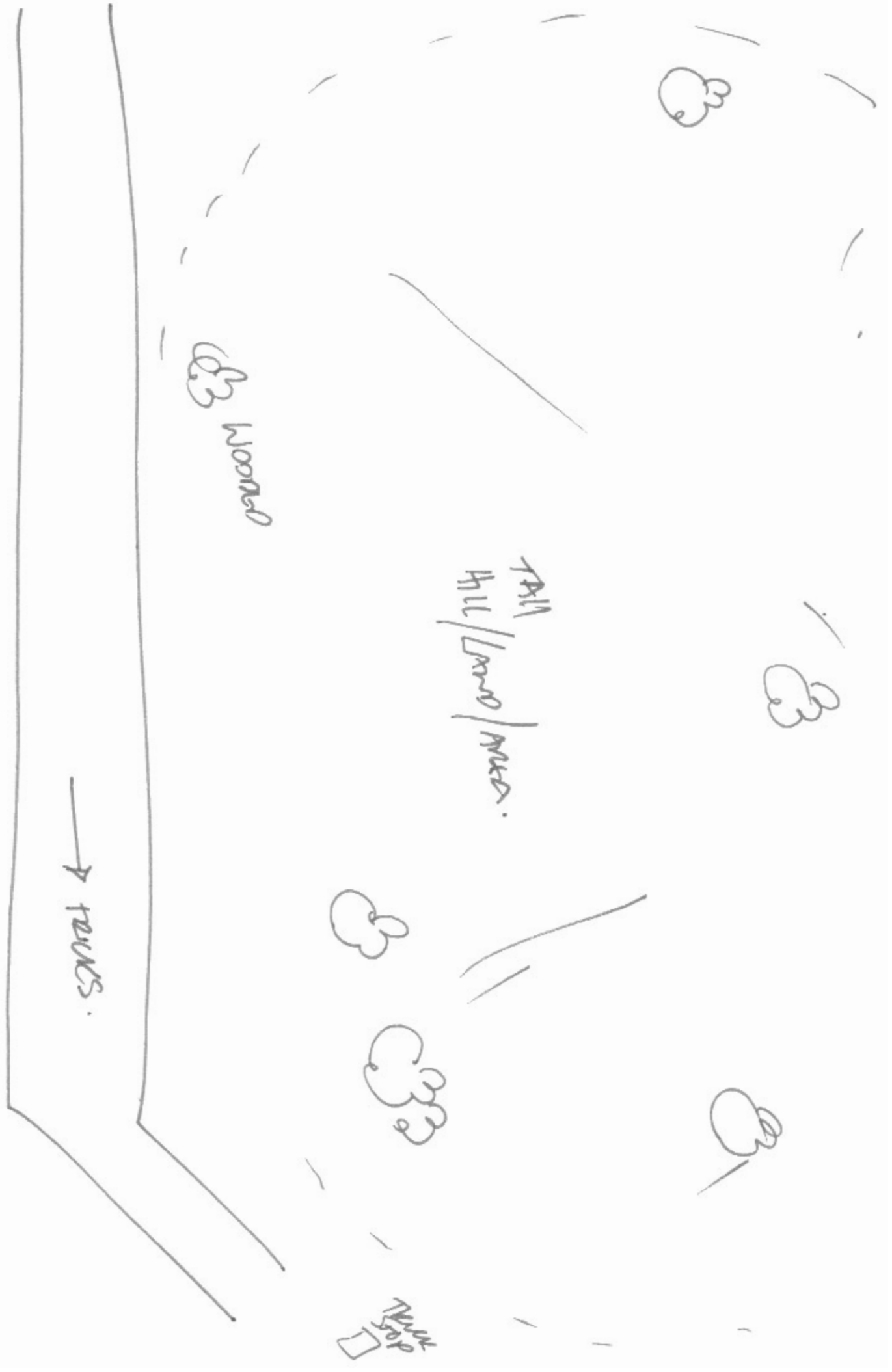
1.40pm

END

DAZ







Bueiro  
Lousamon.





→ 10.1 miles.



This feels 'past'.  
Old event and emotions.

The target feels like they are located in a natural location.  
The location has a downwards motion to it.  
It feels like its at the bottom of a taller area.

The location feels ditch-like.  
This feels natural, wet, spongy and feels like earth and nature.  
The target person feels dead, and buried underneath the earth and vegetation in a make-shift grave.  
This is located in a small ravine type location at the botom of the steep area and in between this and a small humped area.  
The ravine area feels like it has a sake-ilke flowing form to its shape.  
River shaped.  
A bridge (maybe wooden)n feels like its close to the location. As weel as natural wilderness tracks.

The overall area feels green, shaded by trees and vegeation.

There appears to be a linear, mandmade stucture nearby this feels like a road with a dog leg type angle to it.  
This leads to a place begining with 'C'.